



Alba Pro Elite Polaris Predator nerf bar kit instructions

Bolt Kit:

- 1- 10 x 140 mm bolt
- 1 – 10 mm nylok nut
- 2 – ¼ x 1 bolt
- 2 – 5/16 x 1 bolt
- 2 – 5/16 nylok nut
- 2 – ¼ nylok nut
- 4 – 5/16 flat washer

Pic 1:

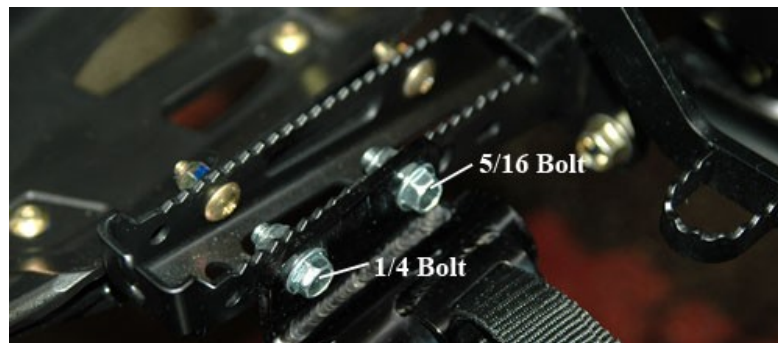


Pic 2:



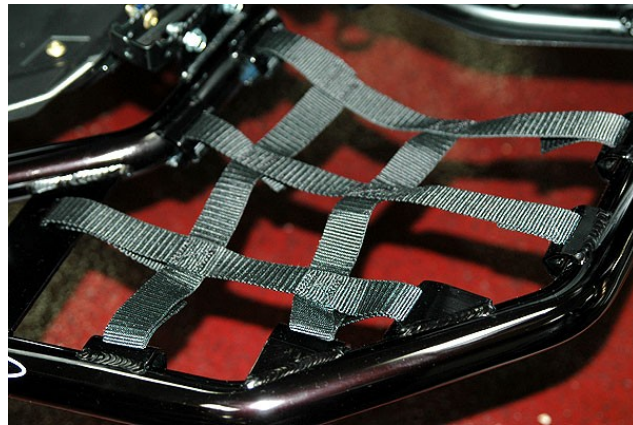
- 1) Remove the lower forward engine mount bolt. See pic. #1 This bolt and nut will not be re-used. When pulling the bolt out it is difficult to get it under the oil line. To make this a little easier leave the washer next to the engine and let it come off the bolt (don't try to squeeze it under the oil line).
- 2) Mount the two forward nerf bar mounts. See Pic 1 and Pic 2 to see what they look like mounted. Use the 10 x 140 bolt and nylok nut. On the oil line side hold the bracket up to the engine hole and slide the bolt into it(don't put it on the bolt and try to push it under the oil line). Install the nut but do not tighten this bolt yet.

Pic 3:



ALBA RACING

- 3) Now slide the front of the nerf on the the forward mount bracket (See pic 1 or 2). Line up the rear nerf mount tab to the holes in the footpeg . See Pic 3. Use the $\frac{1}{4}$ " bolt on the outside tab hole and the $\frac{5}{16}$ bolt on the inside hole. Use the corresponding washer and nut for each bolt. NOTE; There will be one hole at the outside end of the footpeg showing. You may tighten these bolts now. As you tighten them push down on the nerf to be sure the mount tab is below the top of the teeth on your footpeg. Repeat this procedure for the other side.
- 4) Now tighten the forward motor mount bolt that holds the nerfbar forward mounts.
- 5) Install the nets following the pictures:



- 6) Re- check all your bolts for tightness. After your first ride it is a good idea to check your bolts again for tightness.