



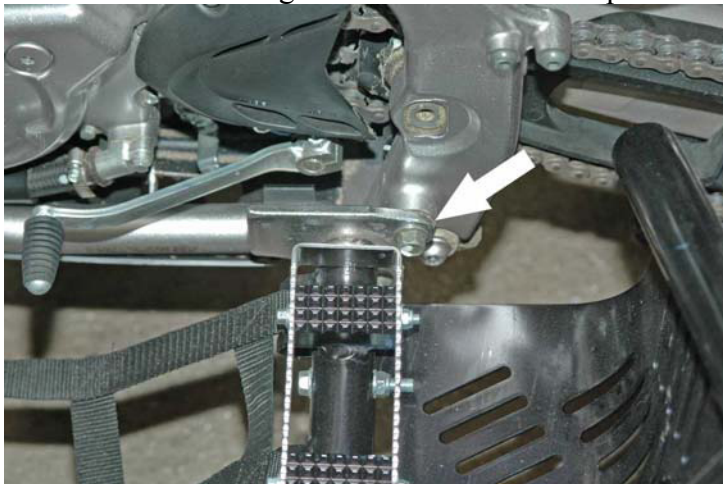
## RAPTOR 700 PRO ELITE RACE NERF BAR INSTRUCTIONS PART # 130-190, 193

Note: There may be extra nuts, washers and bolt in this kit that you will not use.

- 1) Remove footpeg and heelguard assembly from each side – keep the footpeg, master cylinder and fender mount bolts, you will use these again. Remove the circlip from the brake lever .
- 2) Remove the lower engine mount bolt from each side (the bolt that mounts the engine mount bracket to the frame). Use the same bolt with locktite to attach the forward nerf mount to each side. Do not tighten the bolt yet. See Pic.1:



- 3)
- 4) Mount the shifter side nerf bar peg mount (it has an “L” stamped on the back) Use the stock bolts with locktite. Tighten to 56 ft. lbs. Of torque. See Pic. 2:



- 5) Slide the shifter side nerf on to the front and rear mounts. Line up the hole under the foot peg and insert the provided long bolt thru it. Use a flat washer and nylok nut and tighten. Tighten the forward engine mount bolt to 33 ft. lbs of torque. Tighten the allen bolt on the circle clamp.
- 6) For the brake side repeat steps 3 and 4 using the provided snap ring to mount the brake lever to the nerf mount. Be sure it is properly seated in the groove. Be sure to use loctite and tighten all the bolts properly.
- 7) Install the nets per the diagram.



- 8) Check everything for tightness once more. Re-torque the bolts after your first ride.
-