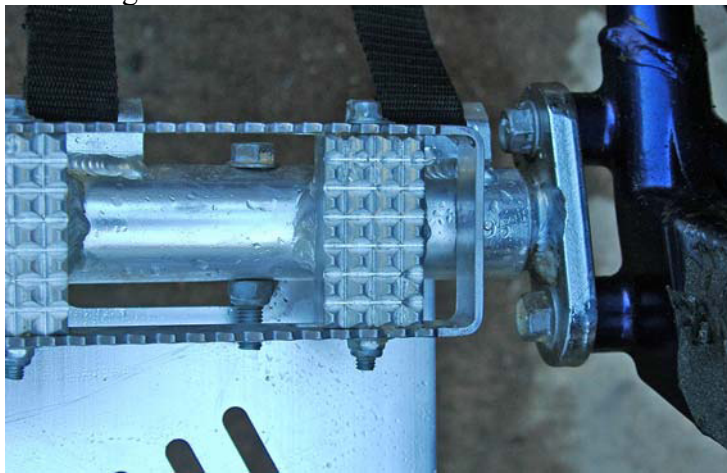




ALBA PRO RACE NERF BAR INSTRUCTIONS - LTR 450

- 1) Remove stock footpegs, footwells and fender braces. Save the footpeg bolts, the fender bolt (you can use this one or the one provided) and the subframe fender stay bolt.
- 2) Install the footpeg mounts. (See pic. 1) Note there is a left and a right stamped on the back of the bracket. R is brake side and L is shift side. Use the stock bolts with locktite. Tighten these bolts.



Pic1:

- 3) Install the forward nerf mounts. (see pic 2) Use the supplied short bolts and 1 spacer on each side. These mount in the front fender stay mounts (remove the stock bolt, which you will not re-use). Do not tighten the long bolt yet.

Note: for clarity the stay mount is removed in this picture



Pic2:

- 4) Install the nerf bar on each side. The foot peg tube goes on the foot peg mount and the forward tube goes over the forward mount tube.
-

- 5) Install the bolt through the nerf subframe stay into the subframe. Do not tighten yet.(see pic3)
- 6) Using the provided 10mm bolts and nuts put 1 on each side thru the hole in the tube under the footpeg, going thru the hole in the footpeg mount tube. Tighten this bolt on each side. (see pic 1)



Pic 3:

- 7) Tighten the forward mount bolt (the one that went into the foreword stay hole) on each side.
- 8) Tighten the allen bolt on the clamp on the forward nerf bar mount on both sides.
- 9) Install the fender brace bolt and nut on each side and tighten. Note – You can use the stock bolt or the new ones that are provided. .(see pic 3)
- 10) The foot pegs are adjustable. Put both sides where you want them and tighten the two bolts and nuts on each side.
- 11) Install the nets on each side according to the diagram.



- 12) Re-check all bolts and nuts for tightness and you are ready to ride.
-