



KAWASAKI KFX450 PRO-ELITE RACE NERF BAR INSTRUCTIONS

- 1) Remove stock footpegs and footwells. Save the footpeg bolts and the fender bolt and nut.



Pic1:

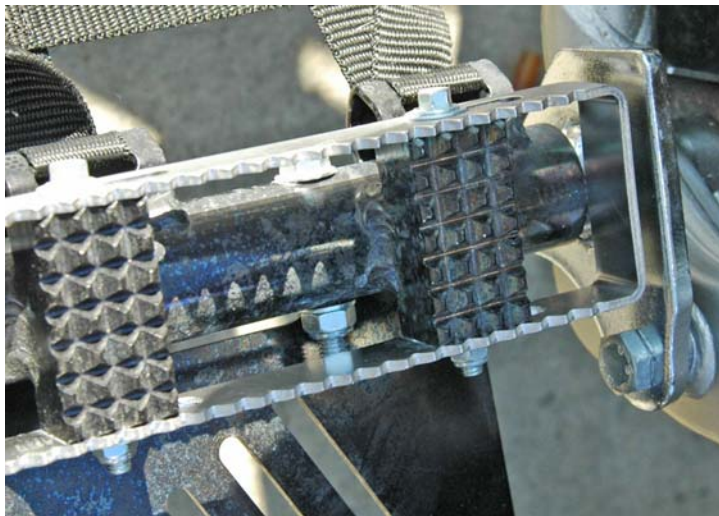
- 2) Install the footpeg mounts (see pic. 1). Note that there is a left and a right stamped on the back of the bracket. R is the brake side and L is the shift side. Use the stock bolts with locktite. Tighten these bolts. NOTE; Be sure to install the brake lever return spring on the brake side (R).



Pic2:



- 3) Install the forward nerf mount block on each side (see pic. 2). Use the 45mm bolts and tighten them. Note that on the shift side the rear bolt is easier to get in if you remove the case bolt that it hits. Use the 35mm bolts and spacers to mount the forward nerf mount tube to the threaded hole in the block – see pic. 2 for assembly – do not tighten this bolt yet. Save the bolts you removed from the engine mount for re-use. RE-INSTALL the case bolt and tighten.
- 4) Install the nerfbar on each side. The footpeg tube goes on the footpeg mount and the forward tube goes over the forward tube mount.
- 5) Using the provided 55mm long bolts and nuts put 1 on each side thru the hole in the tube under the footpeg, going thru the hole in the footpeg mount tube. Tighten this bolt on each side. (see pic 3)



Pic3:

- 6) Tighten the forward mount bolt on each side.
 - 7) Tighten the allen bolt (5mm allen wrench) on the clamp on the forward nerf bar mount on both sides.
 - 8) The foot pegs are adjustable. Put both sides where you want them and tighten the two bolts and nuts on each side.
-

ALBA RACING



Pic4:

- 9) Mount the fender stay and the rear nerf tube stay. (see pic 4) Use the saved engine mount bolts (insert to sub frame) and the provided bolt, nut and washers (to bracket on nerf). Note; on the “L” bracket the short leg goes to the sub-frame. On the long straight bracket the bent tab goes to the sub frame.

- 10) Install the nets on each side according to the diagram.



- 11) Re-check all bolts and nuts for tightness and you are ready to ride.
-