

# Alba Racing Yamaha YXZ100R/SS Intake Spacer Installation

## Tools Required:

¼" drive ratchet

¼" drive extension 3" long

¼" drive 8mm socket

¼" drive 10mm socket

¼" drive swivel extension

¼" drive torque wrench

10mm wrench

12mm wrench

Standard pliers



It is always best to lay out your tools in an organized fashion. Always allow ample time for engine to cool as you will be working close to the engine and cooling lines that can cause serious burns. It is also best to clean your vehicle before working on intake components. If you have questions regarding the install please contact Alba Racing prior to attempting to install at 619-562-0188.

1. Begin by removing the air filter housing access panel.



2. Using the ¼" ratchet and 10mm socket remove the oil tank cover.



3. Use a combination of the ¼" drive ratchet, 3" extension, swivel extension, and 8mm socket to remove the 10 outer screws retaining the secondary filter cover and the hidden 1 screw recessed in center of cover.



4. Using the pliers disconnect the breather hose attached to the bottom middle of the filter cover.

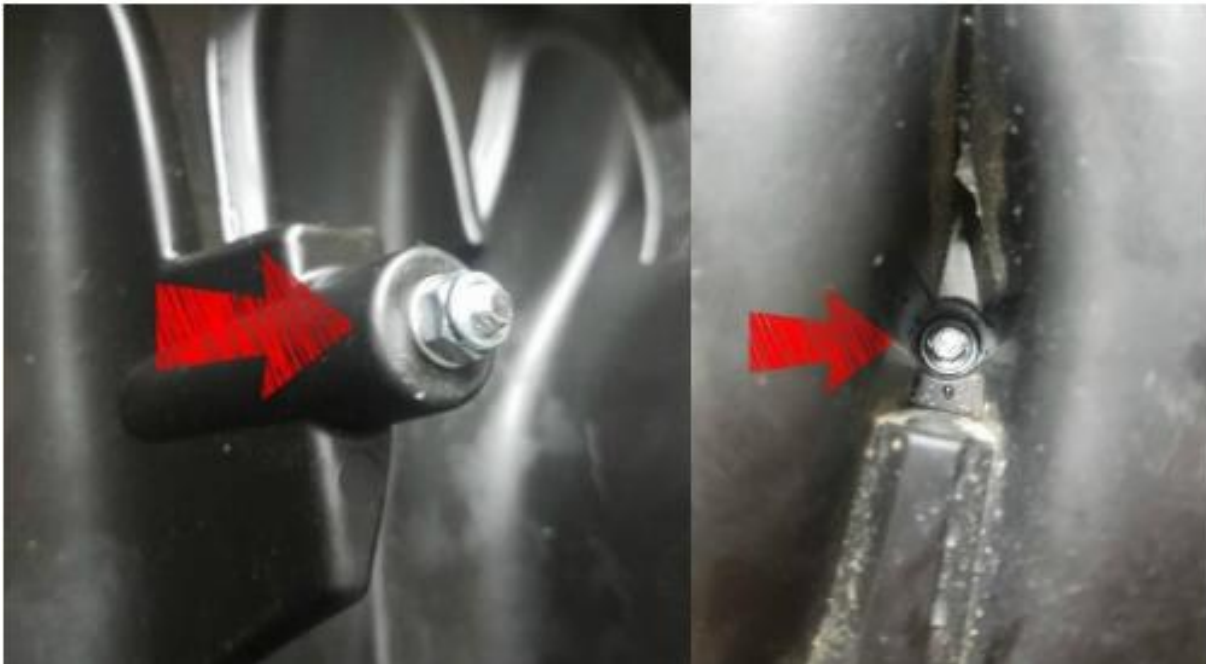


5. Carefully remove the filter cover pulling down from the bottom. The cover will make contact with the rubber air horns and you may have to manipulate it over them a bit. They are rubber.

6. Use one of the factory cover retaining bolt to secure the secondary filter in the middle position of the airbox and torque to 18 in/lbs.

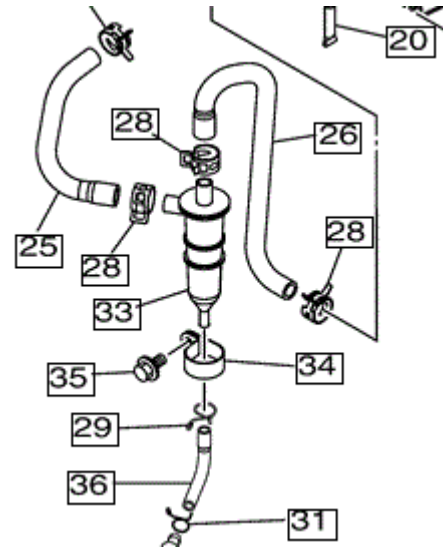


7. Install the provided 10mm bolt and rubber washer in the center position on the filter cover. Slide on the provided std washer and nylock nut and torque to 66 in/lbs.



8. Replace the OEM filter O-ring cover seal with 1 of the provided new seals. Make sure not to stretch the seal when installing or it will be too long when finished. Install the 2<sup>nd</sup> provided OEM filter cover O-ring seal in the Alba Racing Intake Spacer again using care not to stretch it.

9. Tucked up in the corner behind the oil tank you will see a small black canister. This is the breather assembly #33. Loosen the retaining bolt #35. Do not completely remove or it



will be hard to get back in.

10. From the bottom up install the Alba Racing Intake Spacer onto the airbox.

11. Carefully re-install the OEM filter cover. You will again have to manipulate the cover over the air horns.

12. Using the provided new hardware secure the OEM filter cover and torque to 18 in/lbs.



13. Using the pliers reconnect the hose at the bottom of the airbox.

14. Tighten the breather assembly bolt that we loosened and torque to 204 in/lbs.

15. Re-install the oil tank cover and torque the 10mm retaining bolts to 31 in/lbs.

16. Re-install the air filter housing access panel.

You have now completed the installation of the Alba Racing Intake Spacer. Enjoy your new found power!!!