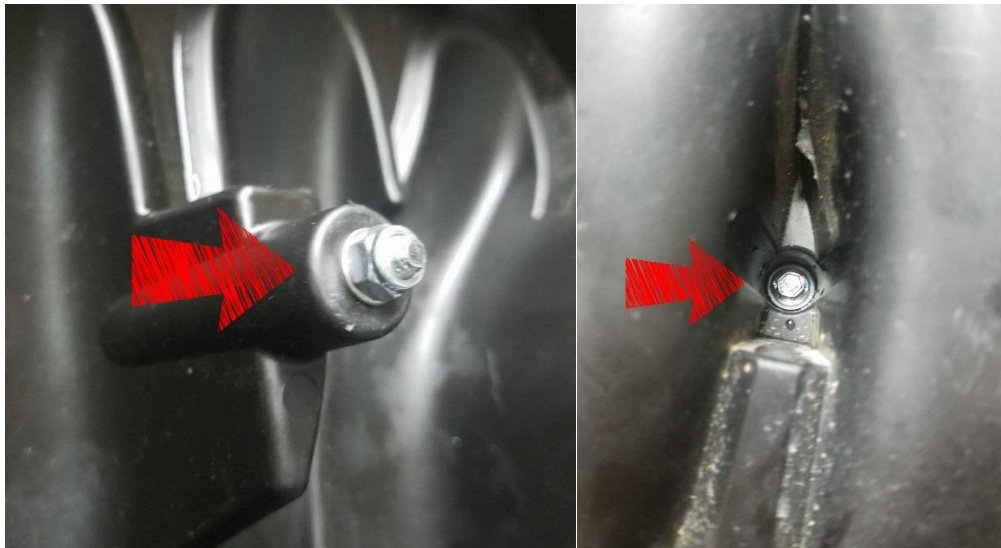


Alba Racing YXZ1000 R/SS Intake Spacer

1. Remove secondary filter cover.
2. Now is a good time to replace your secondary filter if needed.
3. Install 1 OEM cover screw in the center hole to retain secondary air filter.



4. Install Billet spacer.
5. Use provided bolt, rubber washer, and nut to seal center hole on secondary filter cover.



6. Carefully install secondary filter cover with supplied longer screws. You will have to work the cover over the air horns.

7. Tighten outer secondary cover retaining screws. Keep in mind these are going into plastic and the factory torque spec is only 1.3ft/lbs.

If you have any questions please contact Alba Racing at 619-562-0188.

****Not for sale or use in California. **Requires Reflash of ECU or Fuel Controller. **Race use only. **Not Emissions compliant.**